



# What's new in PolyWorks® 2018

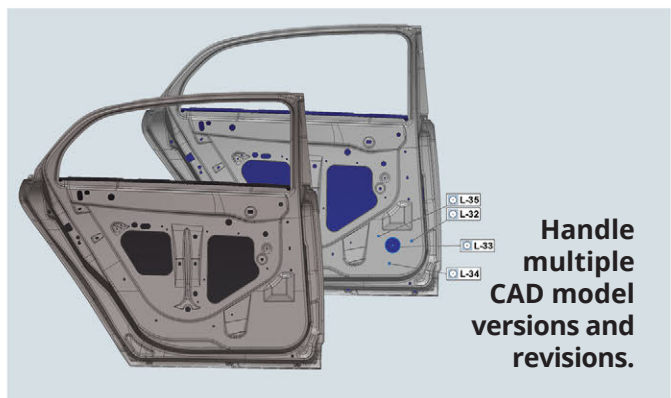
## Universal Inspection Projects

### Deploy **ONE** inspection project with **ALL** your 3D measurement devices

PolyWorks 2018 brings 3D metrology hardware interoperability to the next level. It empowers users to create and deliver shop-floor-ready inspection projects that are directly playable with all portable and CNC CMM 3D measurement devices.

Maximize the use of all your 3D measurement devices and minimize the risk of operator errors by creating and embedding multiple piece measurement templates within a single inspection project!

With piece measurement templates, preconfigure an inspection project to:



Universal inspection projects ensure total flexibility for the overall work organization of your 3D metrology processes.

# Universal 3D Metrology Workflow

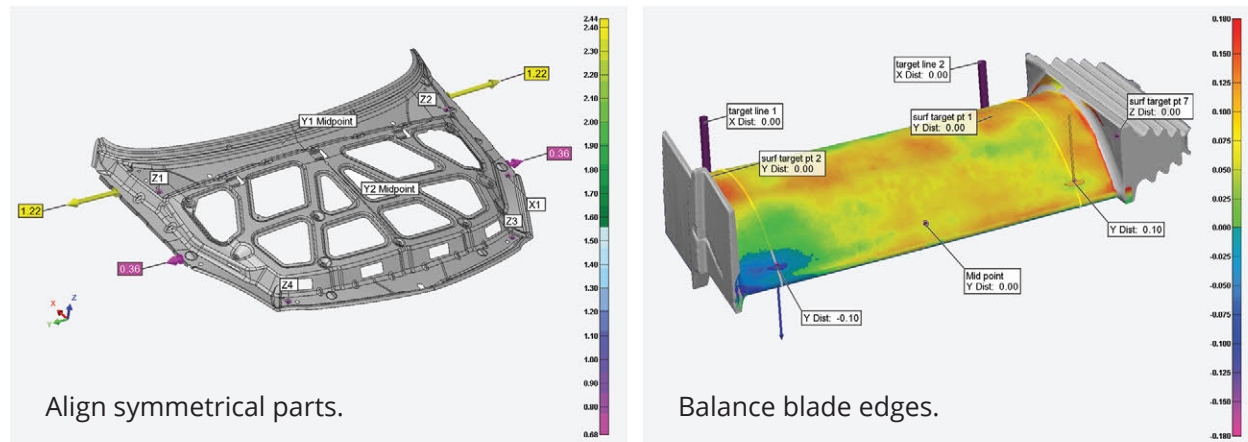
Perform all inspection tasks using a common workflow



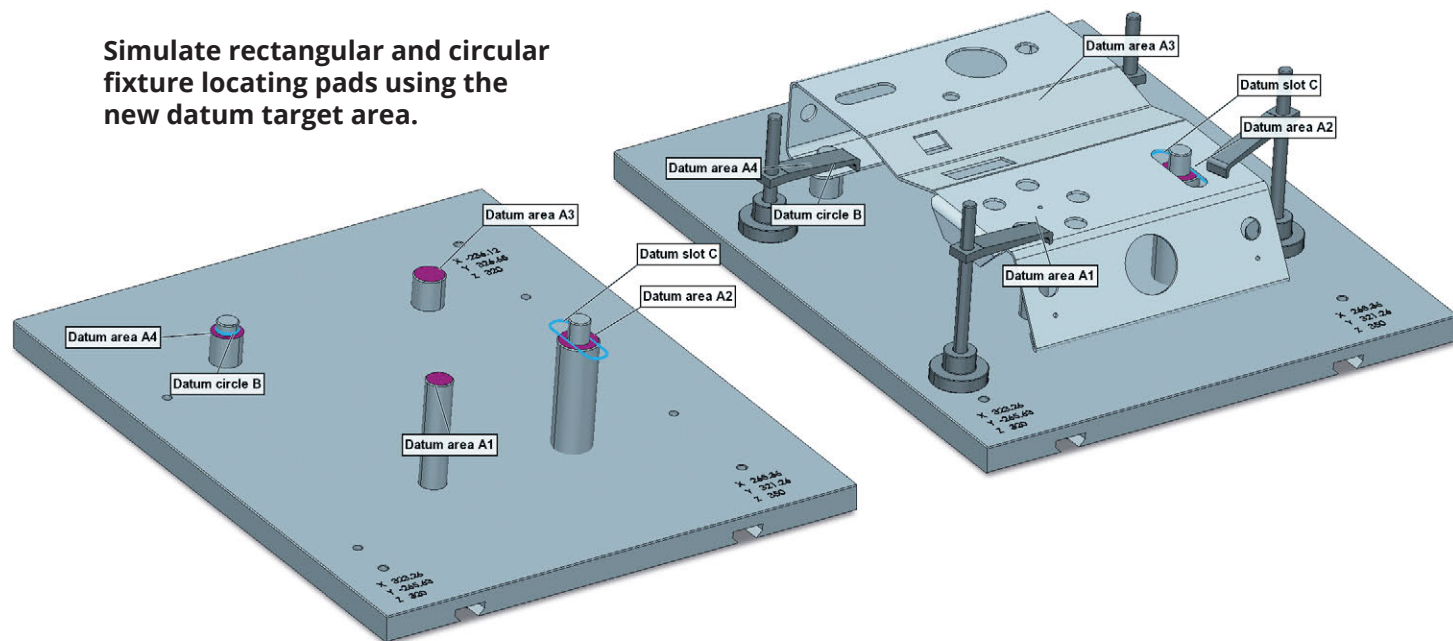
## Enhanced alignment toolbox

PolyWorks 2018 reference target and datum target alignment techniques are more powerful and more complete:

Balance part deviations using the integrated iterative alignment with reference targets bound to constructed features.



Simulate rectangular and circular fixture locating pads using the new datum target area.

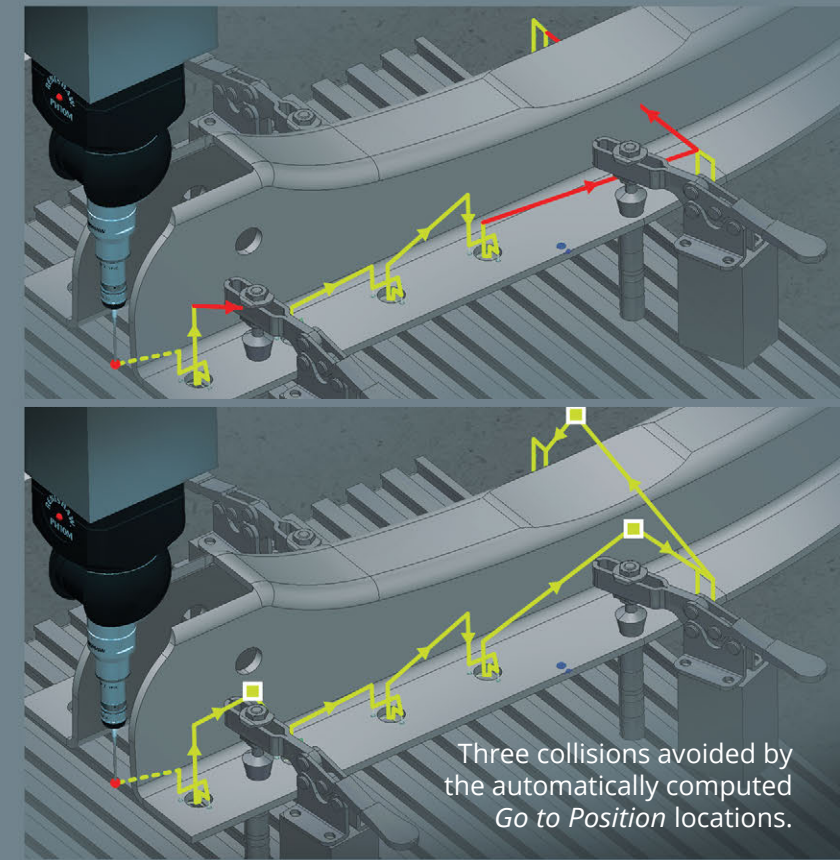


# Universal Digitizing Hub

Interface with all 3D measurement devices

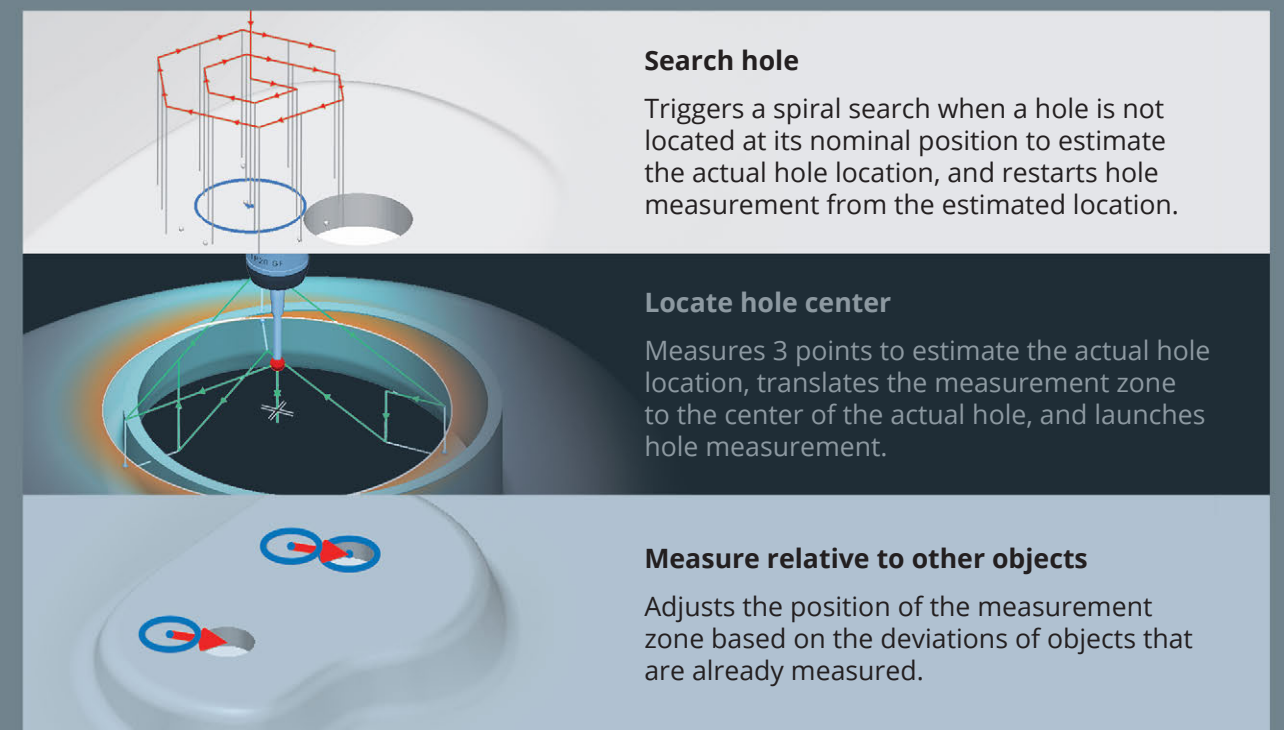
## Smart collision avoidance for CNC CMMs

PolyWorks 2018 adds new measurement sequence fixers to the powerful real-time collision analysis technology. These tools allow inserting automatically computed *Go to Position* locations that modify the CMM measurement path in an optimal way as to prevent detected potential collisions.



## Robust measurement sequences for CNC CMMs

PolyWorks 2018 offers intelligent solutions for measuring deformed, incorrectly aligned, or deviated parts without operator intervention:



### Search hole

Triggers a spiral search when a hole is not located at its nominal position to estimate the actual hole location, and restarts hole measurement from the estimated location.

### Locate hole center

Measures 3 points to estimate the actual hole location, translates the measurement zone to the center of the actual hole, and launches hole measurement.

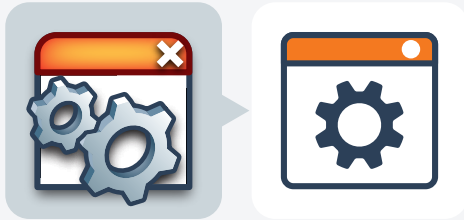
### Measure relative to other objects

Adjusts the position of the measurement zone based on the deviations of objects that are already measured.

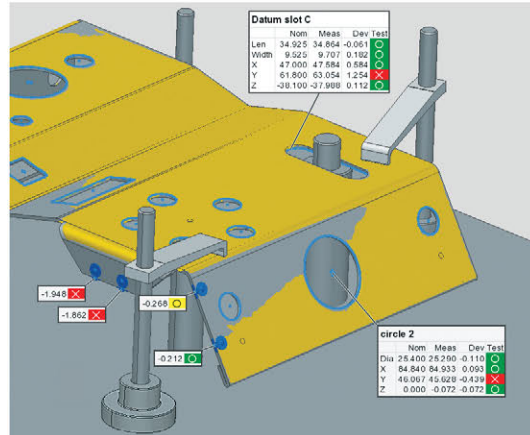
# User Experience

## Enhanced usability and performance

The improved discoverability, ease of use, and performance of tools in PolyWorks 2018 promote valuable gains in user productivity:



**Simplified icons** assure quick recognition, while retaining the original icon concepts.

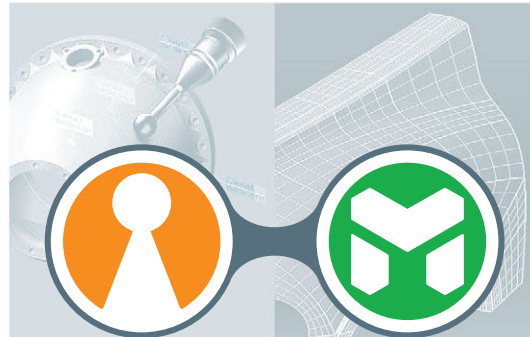


**Colors** are used to focus attention and better communicate results.



	Nom	Meas	Dev	Test
Dia	12.700	12.708	0.008	○
X	86.000	85.999	-0.001	○
Y	25.400	25.469	0.069	○
Z	97.112	97.107	-0.005	○

**Intuitive annotation** positioning and editing tools directly in the 3D Scene.



PolyWorks  
**Inspector**

PolyWorks  
**Modeler**

**Single-click** geometry transfer between products.

© 2018 InnovMetric Software Inc. All rights reserved. PolyWorks® is a registered trademark of InnovMetric Software Inc. InnovMetric, PolyWorks | Inspector, PolyWorks | Modeler, PolyWorks | Talisman, PolyWorks | Reviewer, and "The Universal 3D Metrology Software Platform" are trademarks of InnovMetric Software Inc. SmartGD&T is a trademark of Multi Metrics Inc. All other trademarks are the property of their respective owners.



Corporate Headquarters:

**innovmetric**  
Your 3D Metrology Software Partner

**InnovMetric Software Inc.**  
2014 Cyrille-Duquet, Suite 310, Québec QC G1N 4N6 Canada  
Phone: 1-418-688-2061 | 1-888-688-2061  
info@innovmetric.com | www.innovmetric.com